



GOTHAM

GO10 BIANCO INTRECCIO - GO08 NERO



44GO10 • GO10 BIANCO  
18"x18" 45x45 cm



44GO01 • GO01 BEIGE  
18"x18" 45x45 cm



44GO05 • GO05 GRAY  
18"x18" 45x45 cm



44GO08 • GO08 NERO  
18"x18" 45x45 cm



63GO10 • GO10 BIANCO  
12"x24" 30x60 cm



63GO01 • GO01 BEIGE  
12"x24" 30x60 cm



63GO05 • GO05 GRAY  
12"x24" 30x60 cm



63GO08 • GO08 NERO  
12"x24" 30x60 cm



32GO10  
GO10 BIANCO  
12"x12" 30x30 cm



15GO10  
GO10 BIANCO  
6"x6" 15x15 cm



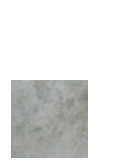
32GO01  
GO01 BEIGE  
12"x12" 30x30 cm



15GO01  
GO01 BEIGE  
6"x6" 15x15 cm



32GO05  
GO05 GRAY  
12"x12" 30x30 cm



15GO05  
GO05 GRAY  
6"x6" 15x15 cm



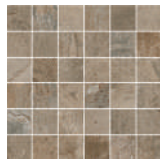
32GO08  
GO08 NERO  
12"x12" 30x30 cm



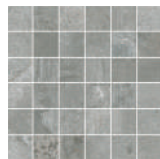
15GO08  
GO08 NERO  
6"x6" 15x15 cm



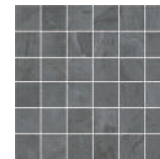
32GO10MO  
GO10 BIANCO  
MOSAIC  
12"x12"  
30x30 cm



32GO01MO  
GO01 BEIGE  
MOSAIC  
12"x12"  
30x30 cm



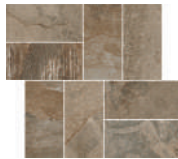
32GO05MO  
GO05 GRAY  
MOSAIC  
12"x12"  
30x30 cm



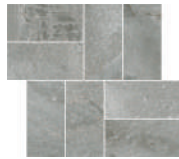
32GO08MO  
GO08 NERO  
MOSAIC  
12"x12"  
30x30 cm



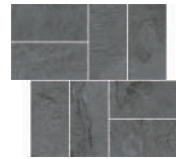
32GO10IN  
GO10 BIANCO  
INTRECCIO  
12"x12"  
30x30 cm



32GO01IN  
GO01 BEIGE  
INTRECCIO  
12"x12"  
30x30 cm



32GO05IN  
GO05 GRAY  
INTRECCIO  
12"x12"  
30x30 cm



32GO08IN  
GO08 NERO  
INTRECCIO  
12"x12"  
30x30 cm

### Special Pieces



13GO10 • GO10 BIANCO BULLNOSE  
3"x12" 8x30 cm



13GO01 • GO01 BEIGE BULLNOSE  
3"x12" 8x30 cm



13GO05 • GO05 GRAY BULLNOSE  
3"x12" 8x30 cm



13GO08 • GO08 NERO BULLNOSE  
3"x12" 8x30 cm



THICKNESS

**0.34"**  
**8.5 mm**



FREEZE / THAW

**RESISTANT**  
ASTM C 1026



WATER ABSORPTION

**~0,1%**  
ASTM C 373



RECOMMENDED USE



CHEMICAL/STAIN RESISTANCE

**Class: A**  
ASTM C 650  
**Class: A**  
ASTM C 1378



SLIP RESISTANCE

**≥0,42**  
ANSI 137.1 (DCOF)



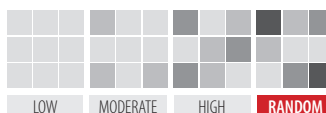
Box



Europallet

PACKAGE	18"x18" 45x45 cm	12"x24" 30x60 cm	12"x12" 30x30 cm	6"x6" 15x15 cm
Pieces	8	8	14	48
Sq.Ft.	17.44	15.54	13.56	11.64
Lbs.	69.52	61.95	54.06	45.75
Boxes	26	32	44	40
Sq.Ft.	453.44	497.28	596.64	465.60
Lbs.	1807.70	1982.50	2378.60	1830.00

### SHADE VARIATION



**D**  
Digital HD  
Porcelain Tiles

**PLUS**

THE GLAZED PORCELAIN

**DELCONCA USA**

Del Conca USA, Inc. - 155 Del Conca Way - Loudon, TN 37774 - USA  
Tel 865.657.3550 - Fax 865.657.3554  
www.delconcausa.com - sales@delconcausa.com

Member of  
**TCNA**  
TILE COUNCIL OF NORTH AMERICA, INC.